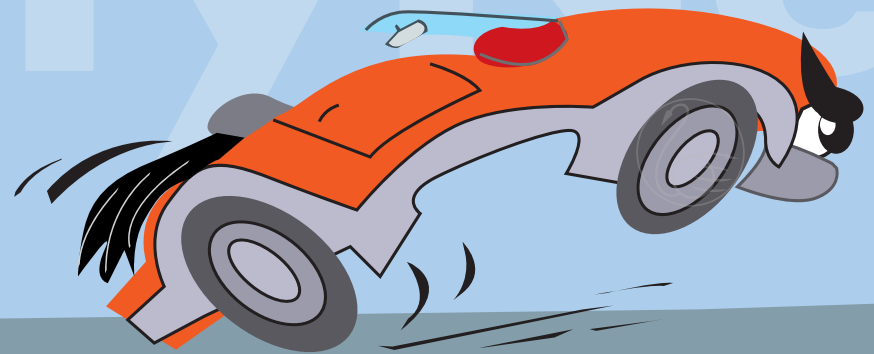




# DRIVING SAFELY



## USE OF COMPANY & PRIVATE VEHICLES AT WORK

### An interactive training course on **Driving Safely**.

This SafetyNet interactive learning course is to help staff understand the **basic principles of safe driving techniques** and their responsibilities for ensuring the safety of themselves, colleagues and everyone while using company or private vehicles at work.

The course highlights the **dangers** that staff can face while driving and the **control measures** required to reduce this risk.

The training message is delivered in a positive mode to ensure all trainees are aware of the current legislation, safety procedures and checks that are required before driving vehicles for work.

The **“safety is a state of mind”** and **“no one works to get hurt”** culture is reinforced throughout the course. The learning design adopted ensures **effective engagement** of the Learner by continued interaction utilizing screen prompts to guide the trainee through the course and those with little or no computer experience will find it easy to use.

- A **cost effective** solution to your training and ongoing assessment requirements.
- **Recorded evidence** of training covering safe working practice and legal compliance.
- **Measurable** progress and achievement.
- **Consistent, reinforced** auditable training.

Having completed the tutorial, a random assessment test is generated and the course records the Learner's progress providing an auditable trail of results and a **certificate** of completion can be printed for successful students.

This certificate provides evidence of the underpinning knowledge required prior to completing a workplace assessment to prove competence.

Successful completion may be used to provide evidence for **Accreditation of Prior Learning for S/ NVQs**.



My **SafetyNet** courses...

- Have the course customized to reflect your company's corporate identity, site requirements and company policy.
- Delivery of training can be configured to suit individual company IT requirements.
- Course accreditation can either be in – house or external (e.g. RoSPA, IOSH or CPD) depending on your particular requirements.



# A COST EFFECTIVE SOLUTION TO YOUR TRAINING

## INTERACTIVE SCENARIOS

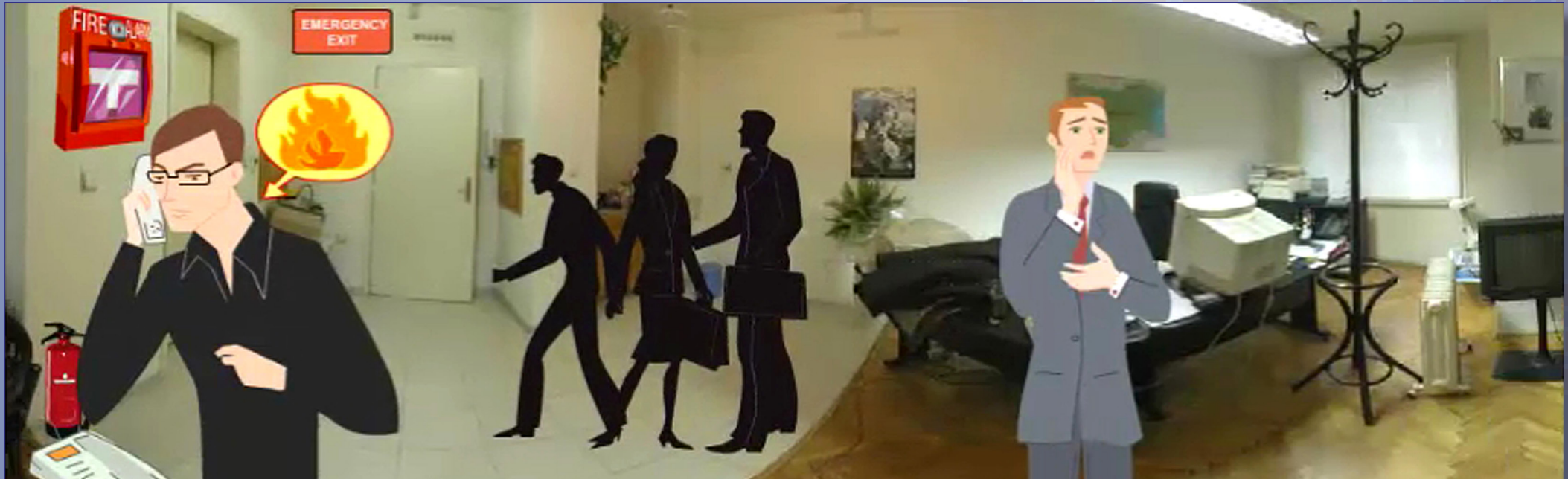
Regardless of the subject matter, all of the learning material that we develop is designed to engage, motivate and challenge the learner through the use of interactive screens which help to improve trainees' knowledge retention.

We are now enhancing the learning environment within our courses by adding course specific interactive scenarios that encourage the learner into interactive play further improving the knowledge transfer.

The courses and modules that we create can be used for standalone or as part of a blended learning approach and much of the materials have been designed with both purposes in mind.

Well designed learning materials can be used in many different scenarios, maximising your investments.

please click image to see demo





## DRIVING SAFELY

### Course Elements

#### Element 1

- Introduction
- Hazard
- Risks
- Control Measures

#### Element 2

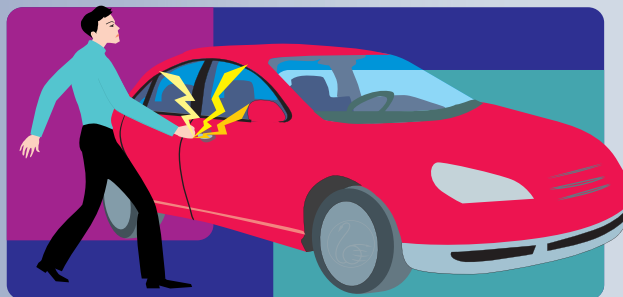
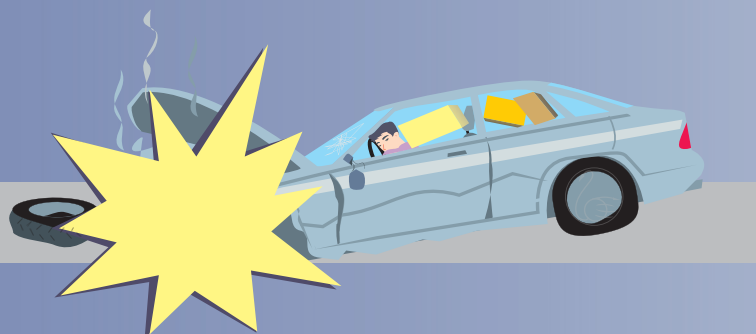
- Carriage of Goods
- Emergency Procedures/Equipment
- Packaging, marking & Labelling

#### Element 3

- Responsibilities
- Use of mobile phones
- Quality driving

#### Element 4

- Driver Assessment
- Documentation
- Manual Handling



## ...training for success

### Other courses in the SafetyNet series:

Working Safely, Health & Safety Awareness, COSHH, Hazard Identification & Risk Assessment, PPE, RPE, Loading & Unloading, Safety in the Office, DSE, Computer Awareness, Manual Handling, Handling & Use of Flammable Liquids, Noise & Vibration, Fire.

### Further information on

**SafetyNet** products available at:

### Swan Multimedia Limited

Swan Multimedia Limited  
A: P.O. Box 43 Belper.  
Derbyshire. DE56 1ZL  
T: + 44 (0) 113 2881209  
F : + 44 (0) 1773 829 682  
E: info@swan-multimedia.co.uk

[www.swan-multimedia.co.uk](http://www.swan-multimedia.co.uk)